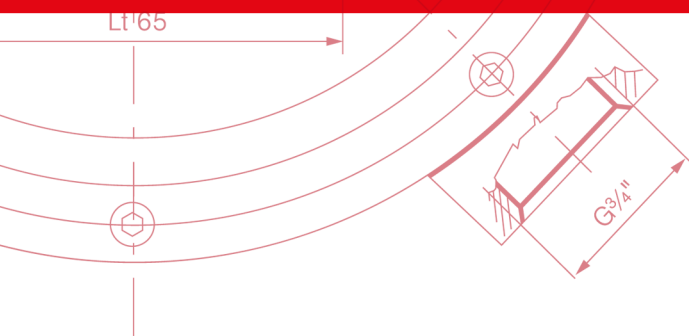


MUNKAHENGER-ALKATRÉSZ KATALÓGUS

Raktári és rendelhető
méretválaszték



BEFOGÁSTECHNIKA

HIDRAULIKA

SZERVIZ

SZAKTANÁCSADÁS

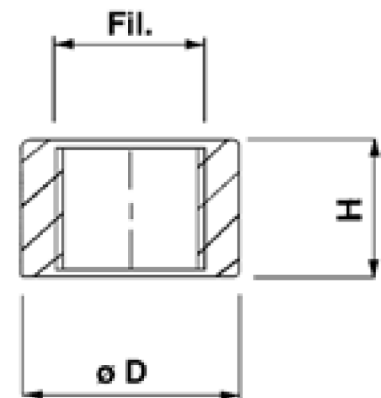
Tartalomjegyzék

Beömlő csonk - BOR.....	3
Munkahengervég - FD	4
Munkahenger csapágó - GE..DO / GE..DO-2RS / GE..LO.....	5
Dugattyútömítés-készlet - KPIS..G	7
Vezetőhüvelytömítés-készlet - KTG.....	8
Munkahenger dugattyú - PIS	10
Rúdfej - PR..CE-UK / PR..U / S..C / S..N	11
Vezetőhüvely - TG.....	15

BOR

BORCHIA FILETTATA THREADED BOSS

- MATERIALE **ST. 37**
- MATERIAL **ST. 37**



SIGLA CODE	QUANTITÀ PER CONFEZIONE <small>PIECES FOR BOX</small>	FIL	H	ø D	PESO WEIGHT
					Kg.
BOR118	1600 pc/pcs	1/8"	10	16	0,025
BOR118/16	1000 pc/pcs	1/8"	16	18	0,030
BOR114	640 pc/pcs	1/4"	16	22	0,030
BOR318	480 pc/pcs	3/8"	17	25	0,043
BOR112	300 pc/pcs	1/2"	18	30	0,054
BOR314	250 pc/pcs	3/4"	20	38	0,096
BOR100	120 pc/pcs	1"	25	45	0,153
BOR1215	800 pc/pcs	12x1,5	15	20	0,020
BOR1415	640 pc/pcs	14x1,5	16	22	0,029
BOR1615	480 pc/pcs	16x1,5	18	24	0,045
BOR1815	350 pc/pcs	18x1,5	18	28	0,052
BOR2215	300 pc/pcs	22x1,5	18	30	0,063

IMPATTO GREEN:

Eurosnodi è particolarmente sensibile all'ambiente, infatti questi particolari, sono inseriti in sacchetti con all'interno striscia di carta **VCI**[®], per preservare il prodotto dall'ossidazione, senza l'aggiunta oli protettivi. La presenza di oli sui componenti destinati alla saldatura provoca l'emissione di fumi di combustione durante il processo dannosi per la salute e l'ambiente.

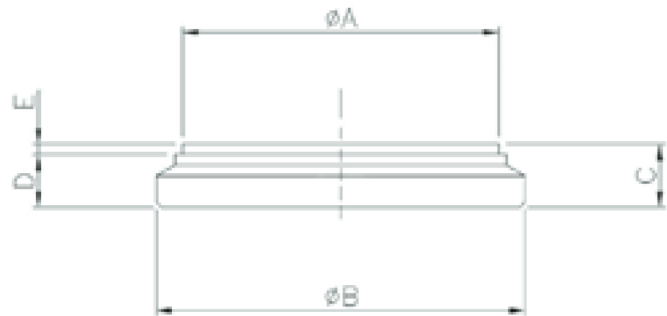
GREEN IMPACT:

Eurosnodi has environment friendly attitude, these item are packaged together with a **VCI**[®] paper strip, it allows to resist rust avoiding preservative lubricant, who will then become smokes during welding, harmful for environment and workers health.

FD..

FONDELLO END PLUG

- MATERIALE **Acciaio S355**
- MATERIAL **S355 Steel**

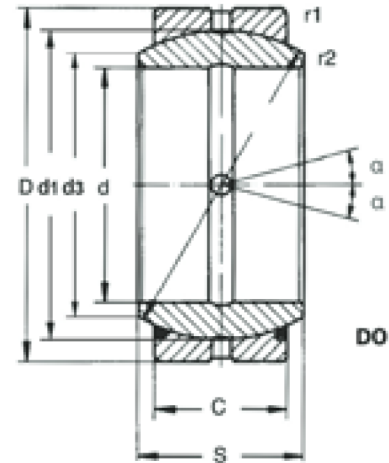


SIGLA CODE	Ø A	Ø B	C	D	E	PESO WEIGHT
						Kg.
FD032P	32	42	8	6,3	1,7	0,06
FD035P	35	45	10	8	2	0,10
FD040P	40	50	10	8	2	0,13
FD045P	45	55	10	8	2	0,16
FD050P	50	60	10	8	2	0,19
FD055P	55	65	12	10	2	0,28
FD060P	60	70	12	10	2	0,33
FD063P	63	73	12	10	2	0,35
FD065P	65	75	12	10	2	0,38
FD06580P	65	80	12	10	2	0,40
FD070P	70	80	12	10	2	0,43
FD07085P	70	85	12	10	2	0,45
FD075P	75	90	12	10	2	0,53
FD080P	80	90	12	10	2	0,55
FD08092P	80	92	12	10	2	0,56
FD08095P	80	95	12	10	2	0,58
FD085P	85	100	15	13	2	0,77
FD090P	90	105	15	13	2	0,86
FD100P	100	115	15	13	2	1,05
FD110P	110	125	15	13	2	1,34
FD120P	120	140	18	16	2	2,00
FD125P	125	145	18	16	2	2,11
FD140P	140	160	18	16	2	2,67
FD150P	150	170	20	18	2	3,33
FD160P	160	180	20	18	2	3,79

GE..DO GE..DO-2RS

SNODI SFERICI RADIALI RADIAL SPHERICAL PLAIN BEARINGS

- ISO 12240-1
- **RILUBRIFICABILI**
- ACCOPPIAMENTO: ACCIAIO SU ACCIAIO
- ISO 12240-1
- **REQUIRING MAINTENANCE**
- **COUPLING: STEEL/STEEL**



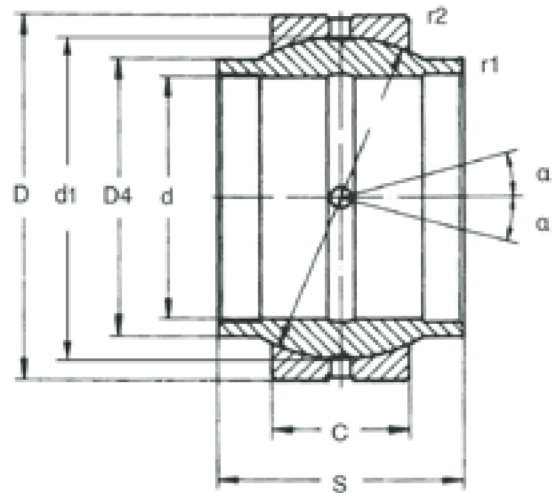
GE..DO		GE..DO-2RS		d	d1	D	d3	S	C	TOLLERANZE TOLERANCES		ANGOLO DI OSCILLAZIONE ANGLE OF OSCILLATION	FATTORI DI CARICO LOAD FACTOR		PESO WEIGHT						
ART.	SIGLA - CODE SNODO SENZA TENUTA BEARING WITHOUT SEALS	ART.	SIGLA - CODE SNODO CON TENUTA BEARING WITH SEALS							d	D		mm	D		mm	°	DINAMICO C DYNAMIC C	STATICO CO STATIC CO	KN	Kg.
400GE	GE6DO ⁽¹⁾	-	-	6	11,12	14	8	6	4	-0,008	-0,008	13	3,4	17	0,004						
401GE	GE8DO ⁽¹⁾	-	-	8	12,7	16	10,2	8	5	-0,008	-0,008	15	5,5	27,5	0,007						
402GE	GE10DO ⁽¹⁾	-	-	10	15,875	19	13,2	9	6	-0,008	-0,009	12	8,15	40,5	0,011						
403GE	GE12DO ⁽¹⁾	-	-	12	18	22	14,90	10	7	-0,008	-0,009	11	10,8	54	0,016						
404GE	GE15DO	425GE	GE15DO-2RS	15	22	26	18,4	12	9	-0,008	-0,009	8	17	85	0,025						
405GE	GE16DO	-	-	16	-	30	20,7	14	10	-0,008	-0,009	10	21,2	106	0,038						
406GE	GE17DO	426GE	GE17DO-2RS	17	25	30	20,7	14	10	-0,008	-0,009	10	21,2	106	0,041						
407GE	GE20DO	427GE	GE20DO-2RS	20	29	35	24,1	16	12	-0,010	-0,011	9	30	146	0,061						
408GE	GE25DO	428GE	GE25DO-2RS	25	35	42	29,3	20	16	-0,010	-0,011	7	48	240	0,11						
409GE	GE30DO	429GE	GE30DO-2RS	30	40	47	34,2	22	18	-0,010	-0,011	6	62	310	0,14						
410GE	GE35DO	430GE	GE35DO-2RS	35	47	55	39,7	25	20	-0,012	-0,013	6	80	400	0,22						
411GE	GE40DO	431GE	GE40DO-2RS	40	53	62	45	28	22	-0,012	-0,013	7	100	500	0,30						
412GE	GE45DO	432GE	GE45DO-2RS	45	60	68	50,7	32	25	-0,012	-0,013	7	127	640	0,40						
413GE	GE50DO	433GE	GE50DO-2RS	50	66	75	55,9	35	28	-0,012	-0,013	6	156	780	0,54						
414GE	GE60DO	434GE	GE60DO-2RS	60	80	90	66,8	44	36	-0,015	-0,015	6	245	1220	1,0						
415GE	GE70DO	435GE	GE70DO-2RS	70	92	105	77,8	49	40	-0,015	-0,015	6	315	1560	1,5						
416GE	GE80DO	436GE	GE80DO-2RS	80	105	120	89,4	55	45	-0,015	-0,015	6	400	2000	2,2						
417GE	GE90DO	437GE	GE90DO-2RS	90	115	130	98,1	60	50	-0,020	-0,018	5	490	2450	2,7						
418GE	GE100DO	438GE	GE100DO-2RS	100	130	150	109	70	55	-0,020	-0,018	7	610	3050	4,3						
419GE	GE110DO	439GE	GE110DO-2RS	110	140	160	121	70	55	-0,020	-0,025	6	655	3250	4,7						
420GE	GE120DO	440GE	GE120DO-2RS	120	160	180	135	85	70	-0,020	-0,025	6	950	4750	8,0						
421GE	GE140DO	441GE	GE140DO-2RS	140	180	210	155	90	70	-0,025	-0,030	7	1080	5400	11,0						
422GE	GE160DO	442GE	GE160DO-2RS	160	200	230	170	105	80	-0,025	-0,030	8	1370	6800	13,5						
423GE	GE180DO	443GE	GE180DO-2RS	180	225	260	198	105	80	-0,025	-0,035	6	1530	7650	18,5						
424GE	GE200DO	551GE	GE200DO-2RS	200	250	290	213	130	100	-0,030	-0,035	7	2120	10600	28,0						
-		552GE	GE220DO-2RS	220	275	320	239	135	100	-0,030	-0,040	8	2320	11600	35,5						
-		553GE	GE240DO-2RS	240	300	340	265	140	100	-0,030	-0,040	8	2550	12700	40,0						
-		554GE	GE260DO-2RS	260	325	370	288	150	110	-0,035	-0,040	7	3050	15300	50,0						
		555GE	GE280DO-2RS	280	350	400	313	155	120	-0,035	-0,040	6	3550	18000	64,0						
		556GE	GE300DO-2RS	300	380	430	336	165	130	-0,035	-0,045	7	3800	19000	75,0						

(1) LUBRIFICAZIONE NON POSSIBILE
(1) LUBRIFICATION NOT POSSIBLE

GE..LO

SNODI SFERICI RADIALI RADIAL SPHERICAL PLAIN BEARINGS

- ISO 12240-1
- **RILUBRIFICABILI**
- ACCOPPIAMENTO: ACCIAIO SU ACCIAIO
- ISO 12240-1
- **REQUIRING MAINTENANCE**
- **COUPLING: STEEL/STEEL**



GE..LO

ART.	SIGLA - CODE SNODO CON TENUTA BEARING WITH SEALS	d	d1	D	S	C	D4	TOLLERANZE TOLERANCES		ANGOLO DI OSCILLAZIONE ANGLE OF OSCILLATION	FATTORI DI CARICO LOAD FACTOR		PESO WEIGHT
								d	D		DINAMICO C DYNAMIC C	STATICO CO STATIC CO	
								mm	mm		KN		
445GE	GE12LO ⁽¹⁾	12	18	22	12	7	15,5	+0,018	-0,009	4	10,8	54	0,020
446GE	GE16LO	16	23	28	16	9	20	+0,018	-0,009	4	17,6	88	0,030
447GE	GE20LO	20	29	35	20	12	25	+0,021	-0,011	4	30	146	0,070
448GE	GE25LO	25	35	42	25	16	30,5	+0,021	-0,011	4	48	240	0,12
569GE	GE30LO	30	40	47	30	18	34	+0,021	-0,011	4	62	310	0,168
449GE	GE32LO	32	44	52	32	18	38	+0,025	-0,013	4	67	335	0,20
450GE	GE40LO	40	53	62	40	22	46	+0,025	-0,013	4	100	500	0,34
451GE	GE50LO	50	66	75	50	28	57	+0,025	-0,013	4	156	780	0,56
452GE	GE63LO	63	83	95	63	36	71,5	+0,030	-0,015	4	255	1270	1,2
453GE	GE70LO	70	92	105	70	40	79	+0,030	-0,015	4	315	1560	1,7
454GE	GE80LO	80	105	120	80	45	91	+0,030	-0,015	4	400	2000	2,4
455GE	GE90LO	90	115	130	90	50	99	+0,035	-0,018	4	490	2450	3,2
456GE	GE100LO	100	130	150	100	55	113	+0,035	-0,018	4	610	3050	4,8
457GE	GE110LO	110	140	160	110	55	124	+0,035	-0,025	4	655	3250	5,8
458GE	GE125LO	125	160	180	125	70	138	+0,040	-0,025	4	950	4750	8,5
561GE	GE160LO	160	200	230	160	80	177	+0,040	-0,030	4	1370	6800	16,5
562GE	GE200LO	200	250	290	200	100	221	+0,046	-0,035	4	2120	10600	32
563GE	GE250LO	250	350	400	250	120	317	+0,046	-0,040	4	3550	18000	99
564GE	GE320LO	320	450	520	320	160	405	+0,057	-0,050	4	6100	30500	240

(1) LUBRIFICAZIONE NON POSSIBILE
(1) LUBRIFICATION NOT POSSIBLE

KPIS..G

KIT GUARNIZIONI PER PISTONI SEALS KIT FOR PISTONS

SIGLA CODE	TENUTA PISTONE PISTON SEAL	TENUTA INTERNA INNER SEAL	KIT PER PISTONE SEAL KIT FOR PISTON
KPIS321530	TPS9503	OR616	PIS03201530
KPIS351540	TPM9007	OR616	PIS03501540
KPIS401540	TPM9008	OR616	PIS04001540
KPIS451540	TPM9014	OR616	PIS04501540
KPIS502040	TPM9015	OR117	PIS05002040
KPIS552040	TPM9018	OR117	PIS05502040
KPIS602050	TPM9020	OR117	PIS06002050
KPIS602445	TPM9020	OR119	PIS06002445
KPIS602750	TPM9020	OR215	PIS06002750
KPIS632050	TPM9021	OR117	PIS06302050
KPIS632750	TPM9021	OR215	PIS06302750
KPIS652050	TPM9024	OR117	PIS06502050
KPIS652445	TPM9024	OR119	PIS06502445
KPIS702050	TPM9025	OR117	PIS07002050
KPIS702445	TPM9025	OR119	PIS07002445
KPIS702750	TPM9025	OR215	PIS07002750
KPIS752445	TPM9027	OR119	PIS07502445
KPIS752750	TPM9027	OR215	PIS07502750
KPIS802445	TPM9028	OR119	PIS08002445
KPIS802750	TPM9028	OR215	PIS08002750
KPIS803050	TPM9028	OR217	PIS08003050
KPIS852445	TPM9031	OR119	PIS08502445
KPIS852750	TPM9031	OR215	PIS08502750
KPIS902750	TPM9033	OR215	PIS09002750
KPIS903350	TPM9033	OR219	PIS09003350
KPIS1002750	TPM9036	OR215	PIS10002750
KPIS1003350	TPM9036	OR219	PIS10003350
KPIS1103350	TPM9041	OR219	PIS11003350
KPIS1104050	TPM9041	OR824	PIS11004050
KPIS1204050	TPM9046	OR824	PIS12004050
KPIS1254050	TPM9047	OR824	PIS12504050
KPIS1404058	TPM9054	OR824	PIS14004058
KPIS1504058	TPM9058	OR824	PIS15004058
KPIS1605158	TPM9061	OR831	PIS16005158
KPIS1808082	TPM9070	OR339	PIS18008082
KPIS2008082	TPM9075	OR339	PIS20008082
KPIS2509882	TPM9084	OR345	PIS25009882

KTG..

KIT GUARNIZIONI PER TESTATE DI GUIDA SEALS KIT FOR PILOT BOSSES

SIGLA CODE	RASCHIATORE WIPER	TENUTA STELO ROD SEAL	TENUTA INTERNA INNER SEAL	TENUTA IN ANGOLO ANGLE SEAL	KIT PER TESTATA SEAL KIT FOR PILOT HEAD
KTG322027	GHK306	TTI1537/2	OR121	OR120	TG03202027
KTG352032	GHK306	TTI1537/2	OR216	OR122	TG03502032
KTG352232	GHK307	TTI1543	OR216	OR122	TG03502232
KTG402032	GHK306	TTI1537/2	OR219	OR126	TG04002032
KTG402232	GHK307	TTS545	OR219	OR126	TG04002232
KTG402532	GHK308	TTI1550	OR219	OR126	TG04002532
KTG452232	GHK307	TTS545	OR222	OR130	TG04502232
KTG452532	GHK308	TTI1550	OR222	OR130	TG04502532
KTG502535	GHK308	TTI1557/1	OR826	OR132	TG05002535
KTG503035	GHK311	TTI1572	OR826	OR132	TG05003035
KTG503535	GHK313	TTI1590	OR826	OR132	TG05003535
KTG553035	GHK311	TTI1572	OR830	OR135	TG05503035
KTG553535	GHK313	TTI1593	OR830	OR135	TG05503535
KTG602540	GHK308	TTI1557/1	OR832	OR138	TG06002540
KTG603040	GHK311	TTI1572	OR832	OR138	TG06003040
KTG603540	GHK313	TTI1593	OR832	OR138	TG06003540
KTG604040	GHK316	TTI1610	OR832	OR138	TG06004040
KTG633040	GHK311	TTI1572	OR835	OR140	TG06303040
KTG633540	GHK313	TTI1593	OR835	OR140	TG06303540
KTG634040	GHK316	TTI1610	OR835	OR140	TG06304040
KTG653040	GHK311	TTI1572	OR836	OR141	TG06503040
KTG653540	GHK313	TTI1593	OR836	OR141	TG06503540
KTG654040	GHK316	TTI1610	OR836	OR141	TG06504040
KTG703040	GHK311	TTI1572	OR839	OR145	TG07003040
KTG703540	GHK313	TTI1593	OR839	OR145	TG07003540
KTG704040	GHK316	TTI1615	OR839	OR145	TG07004040
KTG704540	GHK318	TTI1634	OR839	OR145	TG07004540
KTG705040	GHK322	TTI1650	OR839	OR145	TG07005040
KTG753050	GHK311	TTI1572	OR842	OR146	TG07503050
KTG753550	GHK313	TTI1593	OR842	OR146	TG07503550
KTG754050	GHK316	TTI1615	OR842	OR146	TG07504050
KTG754550	GHK318	TTI1634	OR842	OR146	TG07504550
KTG803050	GHK311	TTI1572	OR845	OR149	TG08003050
KTG803550	GHK313	TTI1593	OR845	OR149	TG08003550
KTG804050B	GHK316	TTI1615	OR845	OR149	TG08004050B
KTG804050	GHK316	TTI1615	OR845	OR149	TG08004050
KTG804550	GHK318	TTI1634	OR845	OR149	TG08004550
KTG805050B	GHK322	TTI1650	OR845	OR149	TG08005050B
KTG805050	GHK322	TTI1650	OR845	OR149	TG08005050
KTG806050	GHK328	TTI1701/1	OR845	OR149	TG08006050

KTG..

KIT GUARNIZIONI PER TESTATE DI GUIDA

SEALS KIT FOR PILOT BOSSES

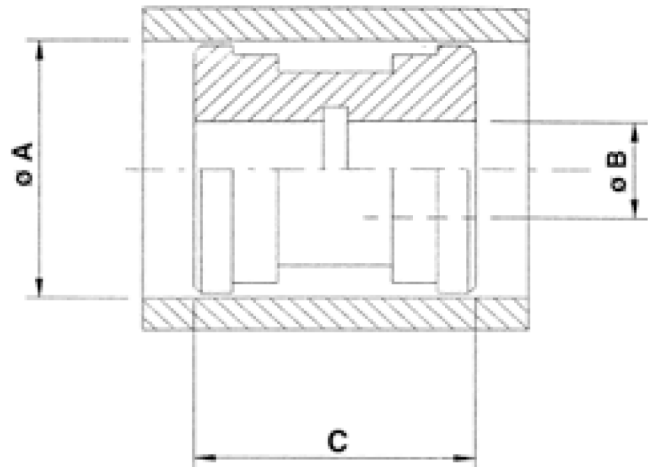
SIGLA CODE	RASCHIATORE WIPER	TENUTA STELO ROD SEAL	TENUTA INTERNA INNER SEAL	TENUTA IN ANGOLO ANGLE SEAL	KIT PER TESTATA SEAL KIT FOR PILOT HEAD	
KTG854550	GHK318	TTI1634	OR619	OR151	TG08504550	
KTG855050	GHK322	TTI1650	OR619	OR151	TG08505050	
KTG904050	GHK316	TTI1615	OR620	OR152	TG09004050	
KTG904550	GHK318	TTI1634	OR620	OR152	TG09004550	
KTG905050	GHK322	TTI1650	OR620	OR152	TG09005050	
KTG906050	GHK328	TTI1702	OR620	OR152	TG09006050	
KTG1004070	GHK316	TTI1610	OR621	OR153	TG10004070	
KTG1004570	GHK318	TTI1634	OR621	OR153	TG10004570	
KTG1005070	GHK322	TTI1650	OR621	OR153	TG10005070	
KTG1005570	GHK326	TTI1673	OR621	OR153	TG10005570	
KTG1006070	GHK328	TTI1702	OR621	OR153	TG10006070	
KTG1007070	GHK334	TTI1751.1	OR621	OR153	TG10007070	
KTG1104560	GHK318	TTI1634	OR622	OR154	TG11004560	
KTG1105060	GHK322	TTI1650	OR622	OR154	TG11005060	
KTG1106070	GHK328	TTI1702	OR622	OR154	TG11006070	
KTG1107070	GHK334	TTI1751.1	OR622	OR154	TG11007070	
KTG1108070	GHK339	TTI1786	OR622	OR154	TG11008070	
KTG1206070	GHK328	TTI1702	OR623	OR156	TG12006070	
KTG1207070	GHK336	TTI1751.1	OR623	OR156	TG12007070	
KTG1256080	GHK328	TTI1702	OR349	OR157	TG12506080	
KTG1257080	GHK336	TTI1751.1	OR349	OR157	TG12507080	
KTG1258080	GHK339	TSE2130	OR349	OR157	TG12508080	
KTG1407080	GHK336	TTI1571.1	OR864	OR160	TG14007080	
KTG1408080	GHK339	TSE2130	OR864	OR160	TG14008080	
KTG1507090	GHK334	TTI1751.1	OR357	OR161	TG15007090	
KTG1508090	GHK339	TSE2130	OR357	OR161	TG15008090	
KTG1606090	GHK328	TTI1702	OR360	OR163	TG16006090	
KTG1608090	GHK339	TSE2130	OR360	OR163	TG16008090	
KTG1609090	GHK342	TTI1808	OR360	OR163	TG16009090	

SIGLA CODE	RASCHIATORE WIPER	TENUTA STELO WIPER	TENUTA INTERNA INNER SEAL	TENUTA IN ANGOLO ANGLE SEAL	GUIDA STELO	KIT PER TESTATA SEAL KIT FOR PILOT HEAD
KTG18010092	GHK344	TTI1830	OR628+GKS628	OR262	AGI100 x3	TG180010092
KTG18012092	GHK348	TTI1868	OR628+GKS628	OR262	AGI120 x3	TG180012092
KTG20010092	GHK344	TTI1830	OR882+GKS882	OR265	AGI100 x3	TG200010092
KTG20012092	GHK348	TTI1868	OR882+GKS882	OR265	AGI120 x3	TG200012092
KTG250150117	GHK356	TTI1912	OR678+GKS678	OR272	AGI150 x3	TG2500150117

PIS..

PISTONE PISTON

- MATERIALE **G25/oleo**
- MATERIAL **G25/oleo**



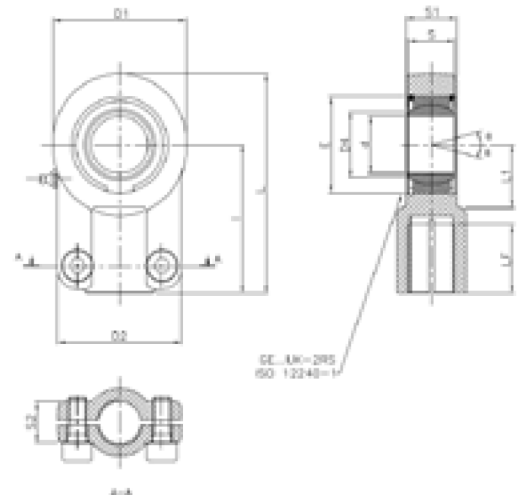
SIGLA CODE	QUANTITÀ PER CONFEZIONE <i>PIECES FOR BOX</i>	Ø A	Ø B	C	PESO WEIGHT
					Kg.
PIS03201530	-	32	15	30	0,09
PIS03201540	-	32	15	40	0,12
PIS03501540	-	35	15	40	0,16
PIS04001540	35 pz/pcs.	40	15	40	0,23
PIS04002040	35 pz/pcs.	40	20	40	0,20
PIS04501540	24 pz/pcs.	45	15	40	0,31
PIS05001540	20 pz/pcs.	50	15	40	0,37
PIS05002040	20 pz/pcs.	50	20	40	0,35
PIS05002050	20 pz/pcs.	50	20	50	0,48
PIS05502040	15 pz/pcs.	55	20	40	0,42
PIS05502050	15 pz/pcs.	55	20	50	0,51
PIS06002045	14 pz/pcs.	60	20	45	0,59
PIS06002050	14 pz/pcs.	60	20	50	0,71
PIS06002445	14 pz/pcs.	60	24	45	0,56
PIS06002750	14 pz/pcs.	60	27	50	0,61
PIS06302050	12 pz/pcs.	63	20	50	0,70
PIS06302750	12 pz/pcs.	63	27	50	0,65
PIS06502050	12 pz/pcs.	65	20	50	0,88
PIS06502445	12 pz/pcs.	65	24	45	0,72
PIS06502550	12 pz/pcs.	65	25	50	0,70
PIS07002050	11 pz/pcs.	70	20	50	0,81
PIS07002445	11 pz/pcs.	70	24	45	0,76
PIS07002750	11 pz/pcs.	70	27	50	0,71

SIGLA CODE	QUANTITÀ PER CONFEZIONE <i>PIECES FOR BOX</i>	Ø A	Ø B	C	PESO WEIGHT
					Kg.
PIS07502445	8 pz/pcs.	75	24	45	0,93
PIS07502750	8 pz/pcs.	75	27	50	1,00
PIS08002445	7 pz/pcs.	80	24	45	1,11
PIS08002750	7 pz/pcs.	80	27	50	1,23
PIS08003350	7 pz/pcs.	80	33	50	1,25
PIS08502445	-	85	24	45	1,30
PIS08502750	-	85	27	50	1,43
PIS09002750	6 pz/pcs.	90	27	50	1,66
PIS09003050	6 pz/pcs.	90	30	50	1,66
PIS09003350	6 pz/pcs.	90	33	50	1,55
PIS10002750	4 pz/pcs.	100	27	50	2,06
PIS10003050	4 pz/pcs.	100	40	50	1,99
PIS10003350	4 pz/pcs.	100	33	50	1,95
PIS10004050	4 pz/pcs.	100	40	50	1,87
PIS11003350	3 pz/pcs.	110	33	50	2,49
PIS11004050	3 pz/pcs.	110	40	50	2,33
PIS12004050	2 pz/pcs.	120	40	50	2,95
PIS12503350	2 pz/pcs.	125	33	50	3,38
PIS12504050	2 pz/pcs.	125	40	50	3,24
PIS14004058	2 pz/pcs.	140	40	58	5,04
PIS15004058	2 pz/pcs.	150	40	58	5,67
PIS16005158	2 pz/pcs.	160	51	58	6,60

PR..CE-UK

TERMINALI A SNODO BALL JOINT ENDS

- RILUBRIFICABILI
- ACCOPPIAMENTO: ACCIAIO SU ACCIAIO
- TERMINALE IN ACCIAIO STAMPATO C45
- DISPONIBILE ANCHE IN VERSIONE AUTOLUBRIFICANTE
- WITH GREASE NIPPLE
- COUPLING: STEEL/STEEL
- BALL JOINT MADE IN FORGED STEEL C45
- AVAILABLE IN MAINTENANCE FREE VERSION



SIGLA CODE	d	S	I	LF	D1	D2	D3	D4	S1	S2	L	L1	F	TOLLERANZE TOLERANCES		GIUOCO SNODO RADIALE RADIAL JOINT CLEARANCE	FATTORI DI CARICO LOAD FACTOR		ANGOLO DI OSCILLAZIONE ANGLE OF OSCILLATION	VITI - SCREWS DIN 912	COPIA DI SERRAGGIO VITI Nm TORQUE OF SCREWS N/m	PESO WEIGHT
														d	S		STATICO CO STATIC CO	DINAMICO C DYNAMIC C				
														mm	mm	mm	KN	°	Kg.			
PR12CE-UK	12	10	38	17	32	32	16	15,5	11	15	54	14	M12x1,25	0±0.018	0±-0.18	0.023±0.068	24,5	11	11°	M5X16	6	0,10
PR20CE-UK	20	16	52	23	47	47	25	25	17,8	18,7	75	22	M16x1,5	0±0.021	0±-0.21	0.030±0.082	48	41	9°	M8X20	25	0,35
PR25CE-UK	25	20	65	29	59	54	30	30,5	21,9	19	96	27	M20x1,5	0±0.021	0±-0.21	0.037±0.100	78	68	7°	M8X20	25	0,62
PR40CE-UK2RS	40	28	97	46	90	80	47	46	33	27	146,1	41	M33x2	0±0.025	0±-0.25	0.043±0.120	204	140	7°	M10X25	49	2,15
PR50CE-UK2RS	50	35	120	57	109	96	58	57	41	32	179,6	50	M42x2	0±0.025	0±-0.25	0.043±0.120	310	220	6°	M12X35	86	4,40
PR70CE-UK2RS	70	49	160	81	157	135	80	79	57	42	245	70	M56x2	0±0.030	0±-0.30	0.055±0.142	540	440	6°	M16X40	210	10,10
PR80CE-UK2RS	80	55	180	86	169,3	148	90	91	67	48	270,6	78	M64x3	0±0.030	0±-0.30	0.055±0.142	695	570	6°	M20X50	410	14,50
PR90CE-UK2RS	90	60	195	91	186	160	100	99	72	52	296	85	M72x3	0±0.035	0±-0.35	0.055±0.142	750	695	5°	M20X60	410	17,50
PR100CE-UK2RS	100	70	210	96	211,4	178	110	113	86	62	322,7	98	M80x3	0±0.035	0±-0.35	0.065±0.165	1060	865	7°	M24X60	710	28,00
PR110CE-UK2RS	110	70	235	106	235	190	125	124	88	62	364	105	M90x3	0±0.035	0±-0.35	0.065±0.165	1200	930	6°	M24X60	710	32,00
PR120CE-UK2RS	120	85	260	113	269	200	135	138	105	72	405,7	120	M100x3	0±0.040	0±-0.40	0.065±0.165	1430	1340	6°	M24X70	710	46,40
PR160CE-UK2RS	160	105	310	126	326	250	165	177	130	82	488	150	M125x4	0±0.040	0±-0.40	0.065±0.192	2200	1930	8°	M24X80	710	81,00
PR200CE-UK2RS	200	130	390	161	418	320	215	221	167	102	620	195	M160x4	0±0.046	0±-0.46	0.065±0.192	3650	3000	7°	M30X100	1500	174
PR280CE-UK2RS	280	155	530	205	580	420	300	315	192	142	847	265	M200x4	0±0.046	0±-0.46	0.065±0.214	6400	5000	6°	M36X140	2450	425

IMPATTO GREEN:

Eurosnodi è particolarmente sensibile all'ambiente, infatti questi particolari, sono inseriti in sacchetti con all'interno striscia di carta **VCI**[®], per preservare il prodotto dall'ossidazione, senza l'aggiunta oli protettivi.

GREEN IMPACT:

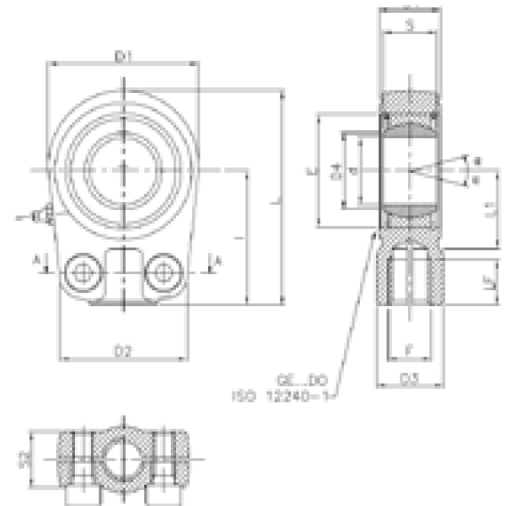
Eurosnodi has environment friendly attitude, these items are packaged together with a **VCI**[®] paper strip, it allows to resist corrosion avoiding preservative lubricant.

PR..U

TERMINALI A SNODO BALL JOINT ENDS

- RILUBRIFICABILI
- ACCOPPIAMENTO: ACCIAIO SU ACCIAIO
- TERMINALE IN ACCIAIO STAMPATO C45
- DISPONIBILE ANCHE IN VERSIONE AUTOLUBRIFICANTE

- WITH GREASE NIPPLE
- COUPLING: STEEL/STEEL
- BALL JOINT MADE IN FORGED STEEL C45
- AVAILABLE IN MAINTENANCE FREE VERSION



SIGLA CODE	d	I	S	LF	D1	D2	D3	D4	E	S1	S2	L	L1	F	TOLLERANZE TOLERANCES		GIUOCO SNODO RADIALE RADIAL JOINT CLEARANCE	FATTORI DI CARICO LOAD FACTOR		ANGOLO DI OSCILLAZIONE ANGLE OF OSCILLATION	VITI - SCREWS DIN 912	COPIA DI SERRAGGIO VITI Nm TORQUE OF SCREWS N/m	PESO WEIGHT
															d	S		STATICO CO	DINAMICO C				
															mm	mm	mm	KN	°	Kg.			
PR20U	20	50	16	17	56	46	25	24,1	35	19	17	80	25	M16x1,5	0±-0.010	0±-0.12	0.030±0.082	72	30	9°	M8X20	25	0,400
PR25U	25	50	20	17	56	46	25	29,3	42	23	21	80	28	M16x1,5	0±-0.010	0±-0.12	0.037±0.100	72	48	7°	M8X20	25	0,475
PR30U	30	60	22	23	64	50	32	34,2	47	28	26	94	30	M22x1,5	0±-0.010	0±-0.12	0.037±0.100	106	62	6°	M8X25	25	0,700
PR35U	35	70	25	29	78	66	40	39,7	55	30	28	112	38	M28x1,5	0±-0.012	0±-0.12	0.037±0.100	153	80	6°	M10X30	49	1,150
PR40U	40	85	28	36	94	76	49	45	62	35	33	135	45	M35x1,5	0±-0.012	0±-0.12	0.043±0.120	250	100	7°	M10X35	49	2,075
PR50U	50	105	35	46	116	90	61	56	75	40	37	168	55	M45x1,5	0±-0.012	0±-0.12	0.043±0.120	365	156	6°	M12X40	86	3,575
PR60U	60	130	44	59	130	120	75	66,8	90	50	46	200	65	M58x1,5	0±-0.015	0±-0.15	0.043±0.120	400	245	6°	M16X45	210	6,200
PR70U	70	150	49	66	157	130	86	77,8	105	55	51	232	75	M65x1,5	0±-0.015	0±-0.15	0.055±0.142	540	315	6°	M16X50	210	9,200
PR80U	80	170	55	81	178	160	105	89,4	120	60	55	265	80	M80x2	0±-0.015	0±-0.15	0.055±0.142	670	400	6°	M20X55	410	13,200
PR90U	90	210	60	101	210	180	124	98,1	130	65	63	323	90	M100x2	0±-0.020	0±-0.20	0.055±0.142	980	490	5°	M20X60	410	23,480
PR100U	100	235	70	111	234	200	138	109,5	150	70	65	360,7	105	M110x2	0±-0.020	0±-0.20	0.065±0.165	1120	610	7°	M24X65	710	26,310
PR110U	110	265	70	125	270	220	152	121,2	160	80	76	408,2	115	M120x3	0±-0.020	0±-0.20	0.065±0.165	1700	655	6°	M24X75	710	39,200
PR120U	120	310	85	135	342	300	172	135,5	180	90	87	490	140	M130x3	0±-0.020	0±-0.20	0.065±0.165	2900	950	6°	M24X85	710	78,000

IMPATTO GREEN:

Eurosnodi è particolarmente sensibile all'ambiente, infatti questi particolari, sono inseriti in sacchetti con all'interno striscia di carta VCI®, per preservare il prodotto dall'ossidazione, senza l'aggiunta oli protettivi.

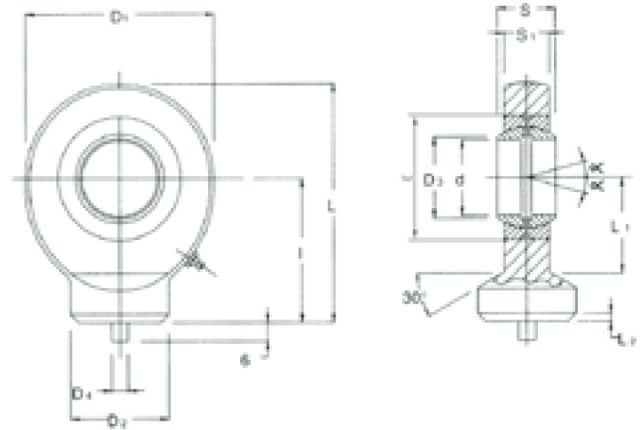
GREEN IMPACT:

Eurosnodi has environment friendly attitude, these items are packaged together with a VCI® paper strip, it allows to resist corrosion avoiding preservative lubricant.

S..C

TERMINALI A SNODO BALL JOINT ENDS

- ISO 12240-4
- **RILUBRIFICABILI**
- ACCOPPIAMENTO: ACCIAIO SU ACCIAIO
- TERMINALE IN ACCIAIO STAMPATO ST. 52.3
- ISO 12240-4
- **WITH GREASE NIPPLE**
- COUPLING: STEEL/STEEL
- BALL JOINT MADE IN FORGED STEEL ST. 52.3



SIGLA CODE	d	S	I	D1	D2	D4	D3	E	S1	L	L1	L2	TOLLERANZE TOLERANCES		GIUOCO SNODO RADIALE RADIAL JOINT CLEARANCE	FATTORI DI CARICO LOAD FACTOR			ANGOLO DI OSCILLAZIONE ANGLE OF OSCILLATION	PESO WEIGHT
													d	S		STATICO CO STATIC CO	DINAMICO C DYNAMIC C	ANGOLO DI OSCILLAZIONE ANGLE OF OSCILLATION		
													mm	mm	mm	KN	°	Kg.		
S10C ⁽¹⁾	10	9	24	29	15	3	13,2	19	6,5	38,5	14	2	0±-0.008	0±-0.008	0.023±0.068	15,6	8,15	12°	0,040	
S12C ⁽¹⁾	12	10	27	36	17,5	3	15	22	8	44	18	2	0±-0.008	0±-0.008	0.023±0.068	21,6	10,8	11°	0,065	
S15C ⁽²⁾	15	12	31	40	21	4	18,4	26	10	51	20	2,5	0±-0.008	0±-0.008	0.030±0.082	32	17	8°	0,120	
S16C ⁽²⁾	16	14	35	47	24	4	20,7	30	11	58	23	3	0±-0.008	0±-0.008	0.030±0.082	40	21,2	10°	0,180	
S17C ⁽²⁾	17	14	35	47	24	4	20,7	30	11	58	23	3	0±-0.008	0±-0.008	0.030±0.082	40	21,2	10°	0,180	
S20C	20	16	38	53	27,5	4	24,1	35	13	64,5	27,5	3	0±-0.010	0±-0.008	0.030±0.082	54	30	9°	0,250	
S25C	25	20	45	64	33,5	4	29,3	42	17	77	33	4	0±-0.010	0±-0.008	0.037±0.100	72	48	7°	0,450	
S30C	30	22	51	73	40	4	34,2	47	19	87,5	37,5	4	0±-0.010	0±-0.008	0.037±0.100	95	62	6°	0,675	
S35C	35	25	61	82	47	4	39,7	55	21	102	43	4	0±-0.012	0±-0.008	0.037±0.100	125	80	6°	0,950	
S40C	40	28	69	92	52	4	45	62	23	115	48	5	0±-0.012	0±-0.008	0.043±0.120	156	100	7°	1,400	
S45C	45	32	77	102	58	6	50,7	68	27	128	52	5	0±-0.012	0±-0.008	0.043±0.120	208	127	7°	1,910	
S50C	50	35	88	112	62	6	56	75	30	144	59	6	0±-0.012	0±-0.008	0.043±0.120	250	156	6°	2,650	
S60C	60	44	100	137	70	6	66,8	90	38	167,5	72,5	8	0±-0.015	0±-0.008	0.043±0.120	390	245	6°	4,600	
S70C	70	49	115	161	80	6	77,8	105	42	195	86	10	0±-0.015	0±-0.008	0.055±0.142	510	315	6°	7,000	
S80C	80	55	141	180	95	6	89,4	120	47	231	98	10	0±-0.015	0±-0.008	0.055±0.142	620	400	6°	10,800	

Note: 1 senza manutenzione
2 foro di lubrificazione, no ingrassatore

Note: 1 not requiring maintenance
2 lubrication hole, no grease nipple

IMPATTO GREEN:

Eurosnodi è particolarmente sensibile all'ambiente, infatti questi particolari, sono inseriti in sacchetti con all'interno striscia di carta **VCI**[®], per preservare il prodotto dall'ossidazione, senza l'aggiunta oli protettivi. La presenza di oli sui componenti destinati alla saldatura provoca l'emissione di fumi di combustione durante il processo dannosi per la salute e l'ambiente.

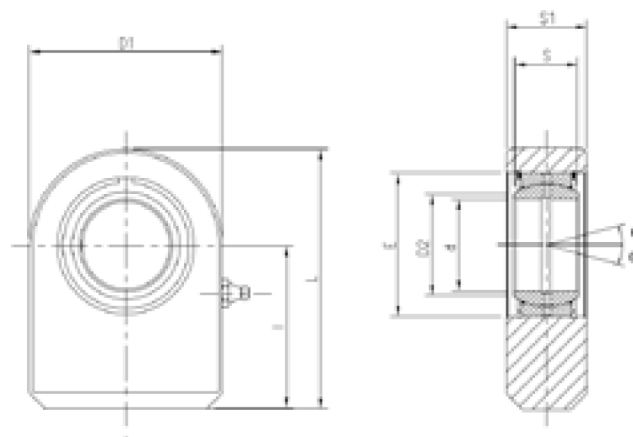
GREEN IMPACT:

Eurosnodi has environment friendly attitude, these item are packaged together with a **VCI**[®] paper strip, it allows to resist rust avoiding preservative lubricant, who will then become smokes during welding, harmful for environment and workers health.

S..N

TERMINALI A SNODO BALL JOINT ENDS

- RILUBRIFICABILI
- ACCOPPIAMENTO: ACCIAIO SU ACCIAIO
- TERMINALE IN ACCIAIO STAMPATO ST. 52.3
- DISPONIBILE CON NODO SFERICO IN ACCIAIO INOX
- WITH GREASE NIPPLE
- COUPLING: STEEL/STEEL
- BALL JOINT MADE IN FORGED STEEL ST. 52.3
- AVAILABLE WITH STAINLESS STEEL PLAN SPHERICAL BEARING



SIGLA CODE	d	S	I	D1	D2	E	S1	L	TOLLERANZE TOLERANCES		GIUOCO SNODO RADIALE RADIAL JOINT CLEARANCE	FATTORI DI CARICO LOAD FACTOR		ANGOLO DI OSCILLAZIONE ANGLE OF OSCILLATION	PESO WEIGHT
									d	S		STATICO CO STATIC CO	DINAMICO C DYNAMIC C		
									mm	mm	mm	KN	°	Kg.	
S16N ⁽¹⁾	16	14	35	48	20,7	30	17	59	0±-0.008	0±-0.12	0.025±0.082	59	21,2	10°	0,290
S17N ⁽¹⁾	17	14	35	48	20,7	30	17,5	59	0±-0.008	0±-0.12	0.025±0.082	65	17	10°	0,290
S20N	20	16	38	50	24,1	35	19	63	0±-0.010	0±-0.12	0.030±0.082	67	30	9°	0,325
S25N	25	20	45	55	29,3	42	23	72,5	0±-0.010	0±-0.12	0.037±0.100	69,5	48	7°	0,500
S30N	30	22	51	65	34,2	47	28	83,5	0±-0.010	0±-0.12	0.037±0.100	118	62	6°	0,825
S35N	35	25	61	83	39,7	55	30	102,5	0±-0.012	0±-0.12	0.037±0.100	196	80	6°	1,475
S40N	40	28	69	100	45	62	35	119	0±-0.012	0±-0.12	0.043±0.120	300	100	7°	2,480
S45N	45	32	77	110	50,7	68	40	132	0±-0.012	0±-0.12	0.043±0.120	380	127	7°	3,450
S50N	50	35	88	123	56	75	40	149,5	0±-0.012	0±-0.12	0.043±0.120	440	156	6°	4,450
S60N	60	44	100	140	66,8	90	50	170	0±-0.015	0±-0.15	0.043±0.120	570	245	6°	7,130
S70N	70	49	115	164	77,8	105	55	197	0±-0.015	0±-0.15	0.055±0.142	695	315	6°	10,700
S80N	80	55	141	180	89,4	120	60	231	0±-0.015	0±-0.15	0.055±0.142	780	400	6°	15,100
S90N	90	60	150	226	98,1	130	65	263	0±-0.020	0±-0.20	0.055±0.142	1340	490	5°	23,400
S100N	100	70	170	250	109,5	150	70	295	0±-0.020	0±-0.20	0.065±0.165	1500	610	7°	33,100
S110N	110	70	185	295	121,2	160	80	332,5	0±-0.020	0±-0.20	0.065±0.165	2160	655	6°	48,500
S120N	120	85	210	360	135,5	180	90	390	0±-0.020	0±-0.20	0.065±0.165	3250	950	6°	79,500

Note: 1 foro di lubrificazione - no ingrassatore

Note: 1 lubrication hole - no grease nipple

IMPATTO GREEN:

Eurosnodi è particolarmente sensibile all'ambiente, infatti questi particolari, sono inseriti in sacchetti con all'interno striscia di carta **VCI**[®], per preservare il prodotto dall'ossidazione, senza l'aggiunta oli protettivi. La presenza di oli sui componenti destinati alla saldatura provoca l'emissione di fumi di combustione durante il processo dannosi per la salute e l'ambiente.

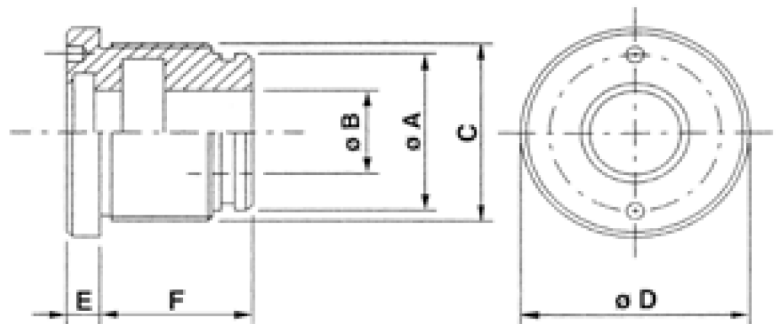
GREEN IMPACT:

Eurosnodi has environment friendly attitude, these item are packaged together with a **VCI**[®] paper strip, it allows to resist rust avoiding preservative lubricant, who will then become smokes during welding, harmful for environment and workers health.

TG..
da $\varnothing 32$ a $\varnothing 80$

TESTATA DI GUIDA PILOT BOSS

- MATERIALE **G25/oleo**
- MATERIAL **G25/oleo**

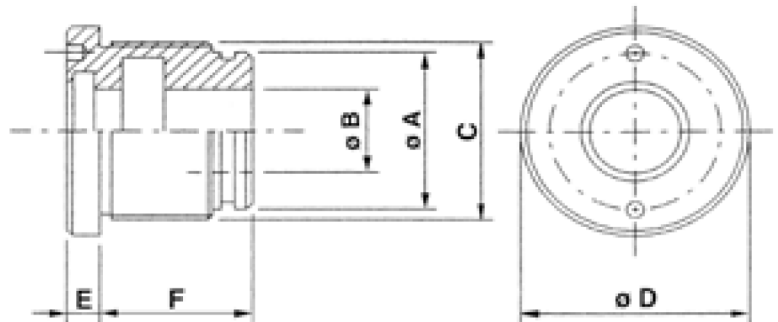


SIGLA CODE	QUANTITÀ PER CONFEZIONE PIECES FOR BOX	Ø A	Ø B	C	Ø D	E	F	PESO WEIGHT
								Kg.
TG03202027	35 pz/pcs	32	20	M36x1.5	42	6	27	0,17
TG03502032	28 pz/pcs	35	20	M39x1.5	45	8	32	0,19
TG03502232	28 pz/pcs	35	22	M39x1.5	45	8	32	0,17
TG04002032	24 pz/pcs	40	20	M44x1.5	50	8	32	0,28
TG04002232	24 pz/pcs	40	22	M44x1.5	50	8	32	0,26
TG04002532	24 pz/pcs	40	25	M44x1.5	50	8	32	0,23
TG04502232	18 pz/pcs	45	22	M49x1.5	55	8	32	0,36
TG04502532	18 pz/pcs	45	25	M49x1.5	55	8	32	0,33
TG05002535	15 pz/pcs	50	25	M54x1.5	60	8	35	0,46
TG05003035	15 pz/pcs	50	30	M54x1.5	60	8	35	0,39
TG05003535	15 pz/pcs	50	35	M54x1.5	60	8	35	0,29
TG05503035	12 pz/pcs	55	30	M60x1.5	65	8	35	0,54
TG05503535	12 pz/pcs	55	35	M60x1.5	65	8	35	0,45
TG06002540	11 pz/pcs	60	25	M64x1.5	70	10	40	0,90
TG06003040	11 pz/pcs	60	30	M64x1.5	70	10	40	0,80
TG06003540	11 pz/pcs	60	35	M64x1.5	70	10	40	0,70
TG06004040	11 pz/pcs	60	40	M64x1.5	70	10	40	0,60
TG06303040	11 pz/pcs	63	30	M681.5	73	10	40	1,08
TG06303540	11 pz/pcs	63	35	M681.5	73	10	40	0,98
TG06304040	11 pz/pcs	63	40	M681.5	73	10	40	0,62
TG06503040	9 pz/pcs	65	30	M69x1.5	75	10	40	1,25
TG06503540	9 pz/pcs	65	35	M69x1.5	75	10	40	1,11
TG06504040	9 pz/pcs	65	40	M69x1.5	75	10	40	0,98
TG07003040	8 pz/pcs	70	30	M74x1.5	80	10	40	1,17
TG07003540	8 pz/pcs	70	35	M74x1.5	80	10	40	1,06
TG07004040	8 pz/pcs	70	40	M74x1.5	80	10	40	0,94
TG07004540	8 pz/pcs	70	45	M74x1.5	80	10	40	0,76
TG07005040	8 pz/pcs	70	50	M74x1.5	80	10	40	0,66
TG07503050	6 pz/pcs	75	30	M80x2	90	10	50	1,72
TG07503550	6 pz/pcs	75	35	M80x2	90	10	50	1,62
TG07504050	6 pz/pcs	75	40	M80x2	90	10	50	1,46
TG07504550	6 pz/pcs	75	45	M80x2	90	10	50	1,33
TG08004050/B	6 pz/pcs	80	40	M84x1.5	90	10	50	1,73
TG08005050/B	6 pz/pcs	80	50	M84x1.5	90	10	50	1,42
TG08003050	6 pz/pcs	80	30	M85x2	92	10	50	2,25
TG08003550	6 pz/pcs	80	35	M85x2	92	10	50	1,88
TG08004050	6 pz/pcs	80	40	M85x2	92	10	50	1,73
TG08004550	6 pz/pcs	80	45	M85x2	92	10	50	1,58
TG08005050	6 pz/pcs	80	50	M85x2	92	10	50	1,42
TG08006050	6 pz/pcs	80	60	M85x2	92	10	50	1,37

TG..
da ø85 a ø160

TESTATA DI GUIDA PILOT BOSS

- MATERIALE **G25/oleo**
- MATERIAL **G25/oleo**

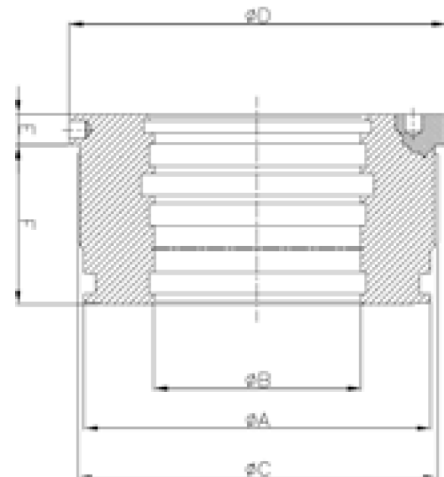


SIGLA CODE	QUANTITÀ PER CONFEZIONE <i>PIECES FOR BOX</i>	Ø A	Ø B	C	Ø D	E	F	PESO WEIGHT
								Kg.
TG08503550	6 pz/pcs	85	35	M90x2	100	10	50	2,15
TG08504050	6 pz/pcs	85	40	M90x2	100	10	50	2,00
TG08504550	6 pz/pcs	85	45	M90x2	100	10	50	1,85
TG08505050	6 pz/pcs	85	50	M90x2	100	10	50	1,67
TG09004050	5 pz/pcs	90	40	M95x2	105	10	50	2,31
TG09004550	5 pz/pcs	90	45	M95x2	105	10	50	2,16
TG09005050	5 pz/pcs	90	50	M95x2	105	10	50	1,99
TG09006050	5 pz/pcs	90	60	M95x2	105	10	50	1,57
TG10004070	3 pz/pcs	100	40	M105x2	115	12	70	4,14
TG10004570	3 pz/pcs	100	45	M105x2	115	12	70	3,94
TG10005070	3 pz/pcs	100	50	M105x2	115	12	70	3,71
TG10005570	3 pz/pcs	100	55	M105x2	115	12	70	3,68
TG10006070	3 pz/pcs	100	60	M105x2	115	12	70	3,13
TG10007070	3 pz/pcs	100	70	M105x2	115	12	70	3,08
TG11004560	2 pz/pcs	110	45	M115x2	125	12	60	4,60
TG11005060	2 pz/pcs	110	50	M115x2	125	12	60	4,40
TG11006070	2 pz/pcs	110	60	M115x2	125	12	60	4,90
TG11007070	2 pz/pcs	110	70	M115x2	125	12	60	4,70
TG11008070	2 pz/pcs	110	80	M115x2	125	12	60	4,50
TG12006070	2 pz/pcs	120	60	M125x2	140	12	70	5,30
TG12007070	2 pz/pcs	120	70	M125x2	140	12	70	4,57
TG12008070	2 pz/pcs	120	80	M125x2	140	12	70	4,57
TG12506080	2 pz/pcs	125	60	M130x2	145	12	80	6,63
TG12507080	2 pz/pcs	125	70	M130x2	145	12	80	5,83
TG12508080	2 pz/pcs	125	80	M130x2	145	12	80	6,63
TG14007080	2 pz/pcs	140	70	M145x2	160	12	80	9,12
TG14008080	2 pz/pcs	140	80	M145x2	160	12	80	8,40
TG15007090	1 pz/pcs	150	70	M155x2	170	12	90	10,58
TG15008090	1 pz/pcs	150	80	M155x2	170	12	90	9,75
TG16008090	1 pz/pcs	160	80	M165x2	180	12	90	13,10
TG16009090	1 pz/pcs	160	90	M165x2	180	12	90	12,07

TG..
da $\varnothing 180$ a $\varnothing 250$

TESTATA DI GUIDA PILOT BOSS

- MATERIALE **G25/oleo**
- MATERIAL **G25/oleo**



SIGLA CODE	Ø A	Ø B	C	Ø D	E	F	PESO WEIGHT
							Kg.
TG18010092	180	100	M188x2,5	210	18	92	15,82
TG18012093	180	120	M188x2,5	210	18	92	12,65
TG20010092	200	100	M208x2,5	218	18	92	20,59
TG20012092	200	120	M208x2,5	218	18	92	17,40
TG250150117	250	150	M208x2,5	268	18	117	33,,00

IMPATTO GREEN:

Eurosnodi è particolarmente sensibile all'ambiente, infatti questi particolari, sono inseriti in sacchetti con all'interno striscia di carta **VCI**[®], per preservare il prodotto dall'ossidazione, senza l'aggiunta oli protettivi.

GREEN IMPACT:

Eurosnodi has environment friendly attitude, these items are packaged together with a **VCI**[®] paper strip, it allows to resist corrosion avoiding preservative lubricant..

További termékeinket
megtekintheti weboldalunkon.



www.gimex.hu



GIMEX-Hidraulika Kft.

Cím: H-9025 Győr, Selyem utca 1
Központi telefon: +36-96/427-239
Központi fax: +36-96/525-589
E-mail: info@gimex.hu



Kövessen minket.