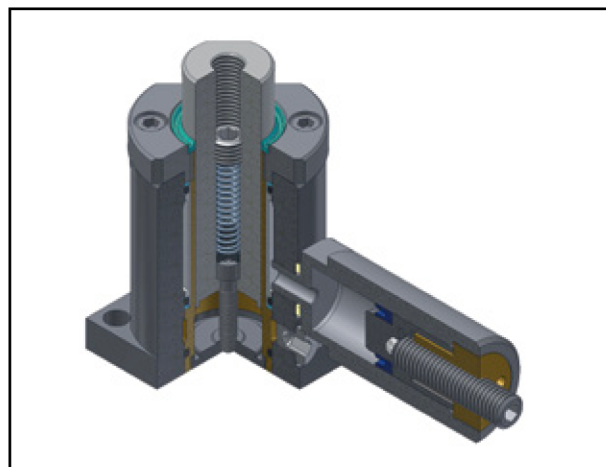


KOSTYRKA® SERIES 1220 SCREW PUMPS.

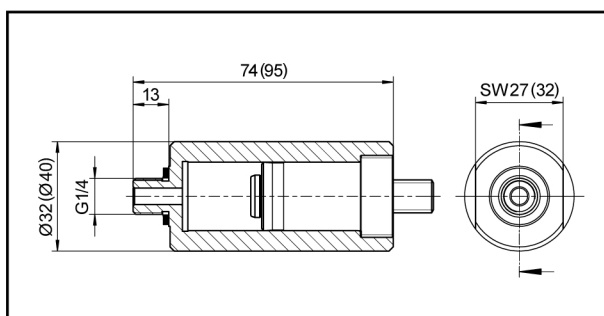


Example of use

A screw pump actuates the KOSTYRKA® hydraulic support unit 5310.30. There is no need for the pressure lines and the external pump that are otherwise required.



Example of use.



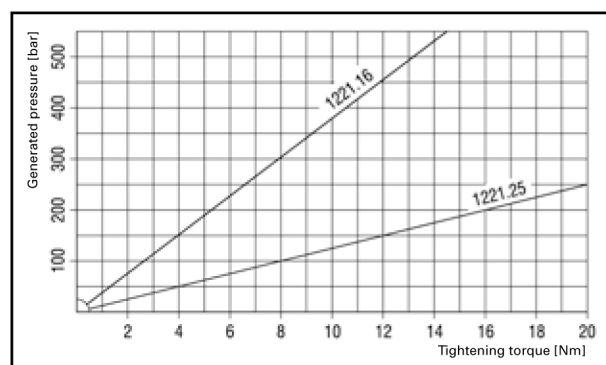
Dimensions Type 1221.16;

Dimensions Type 2121.25 in brackets.

The KOSTYRKA® screw pistons 1221.16 and 1221.25 are also supplied as complete screw pumps. For this, the screw pistons are installed in suitable housings that can be screwed directly into the G1/4 connection holes.

Pressure flow

With the setscrew of the KOSTYRKA® screw piston lubricated with grease, the diagram shows the approximate relationship between the applied tightening torque and the oil pressure generated. A MoS₂-based lubricant can improve efficiency still further.

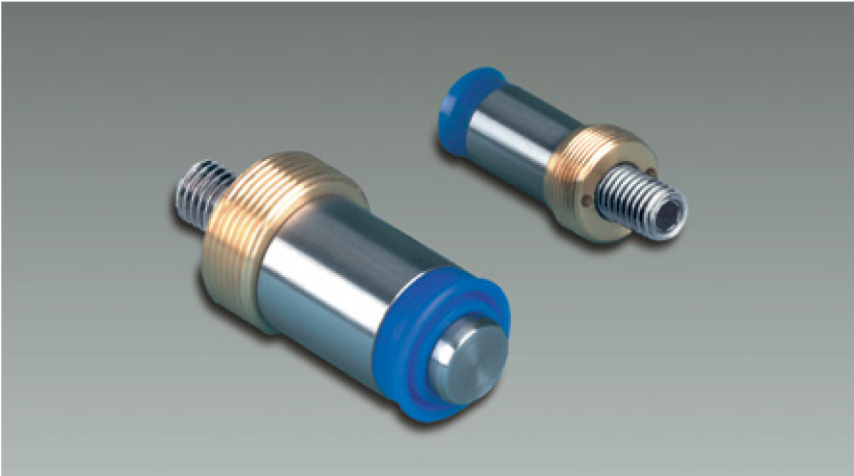


Relationship between the applied tightening torque and the oil pressure.

Customer-specific solutions are always possible. Contact our Development Department for details.

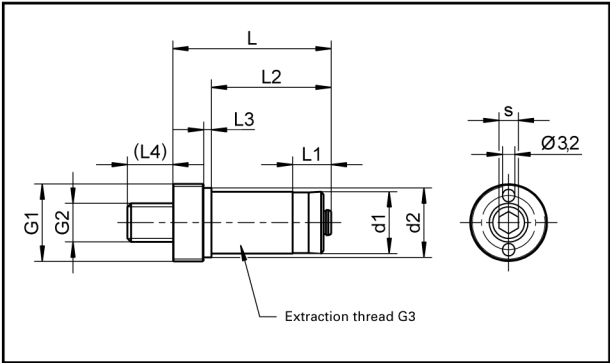
KOSTYRKA® SERIES 1221 SCREW PISTONS.

KOSTYRKA® screw pistons allow pressure oil to be produced by simple screwing in using an Allen key. The screw pistons are supplied ready to install and should preferably be installed directly in the prepared holes in the fixture body or machine body. The very long piston is hardened and ground. A setscrew serving as a pressure spindle runs in bronze. A hardened steel ball on the piston base ensures low-friction, controlled force transmission.



Technical details and dimensions

Typ	G1	G2	G3	d1	d2	L	L1	L2	L3	L4	s	H	V
1221.16	M20 x 1,0	M10 x 35	M12	16	18	41	10	31	2	12	5	15	3
1221.25	M30 x 1,5	M12 x 50	M16	25	-	52	12	40	-	15	6	25	12

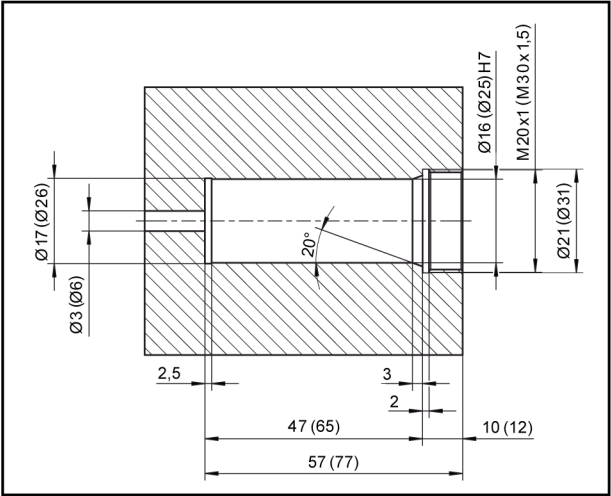


Dimensions Series 1221 screw pistons.

Locating holes for Type 1221.16 and 1221.25 screw pistons

It is essential to configure the locating holes for the aforementioned screw pistons as shown here besides.

To avoid damaging the sealing lips during installation, it is essential to give the hole a sufficiently large, rounded 20° lead chamfer. The displacement volume V can be increased by adjusting the hole depth 47(65) accordingly and using longer setscrews G2.



Dimensions location holes for Type 1221.16 and 1221.25 (in brackets).